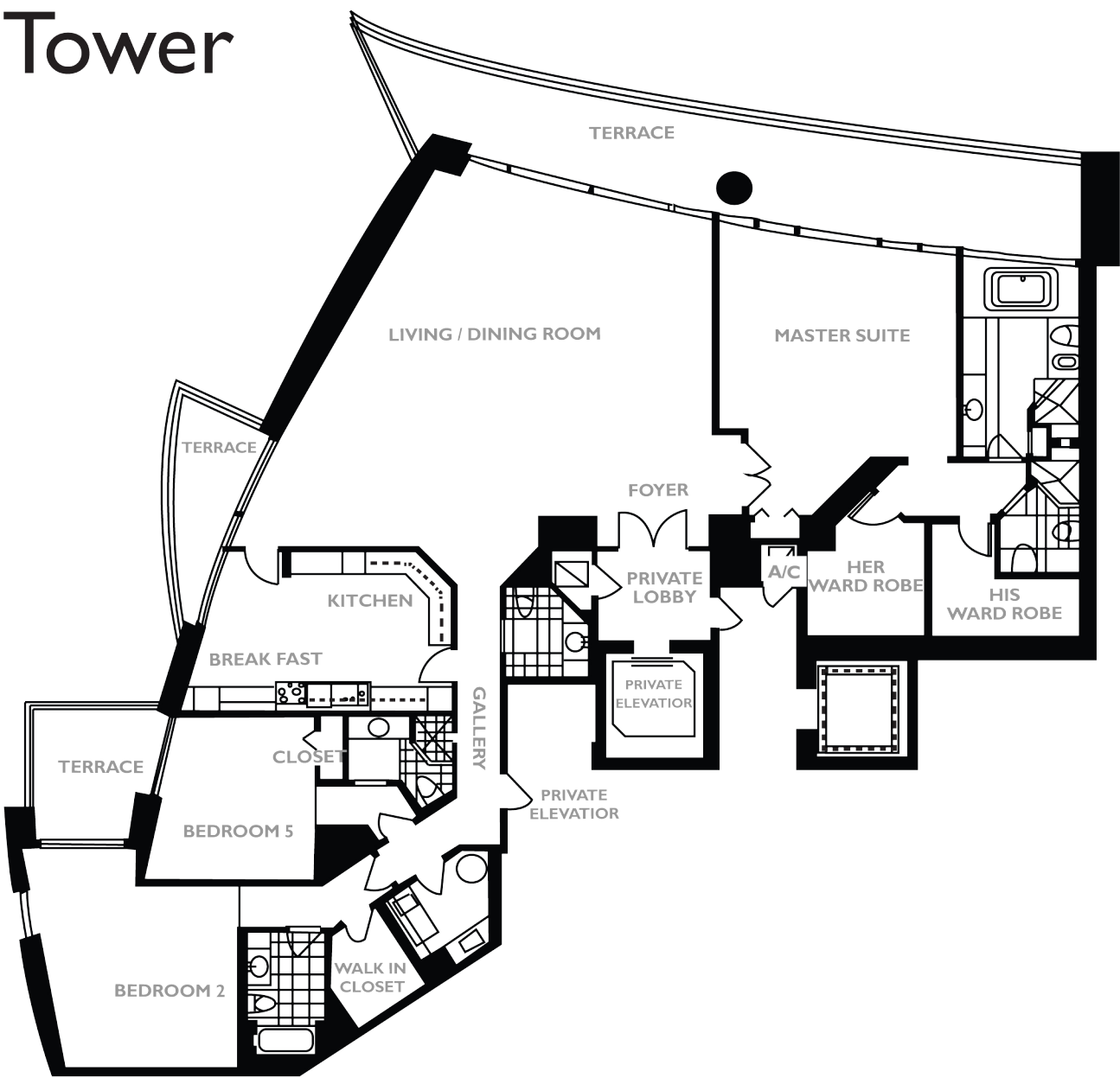


# Unit D North Tower

## Porto Vita

3 BEDROOMS / 4.5 BATHS	
Enclosed Area	3,641 SQ FT 338 SQ M
Balcony	750 SQ FT 70 SQ M
Total Residence	4,391 SQ FT 408 SQ M

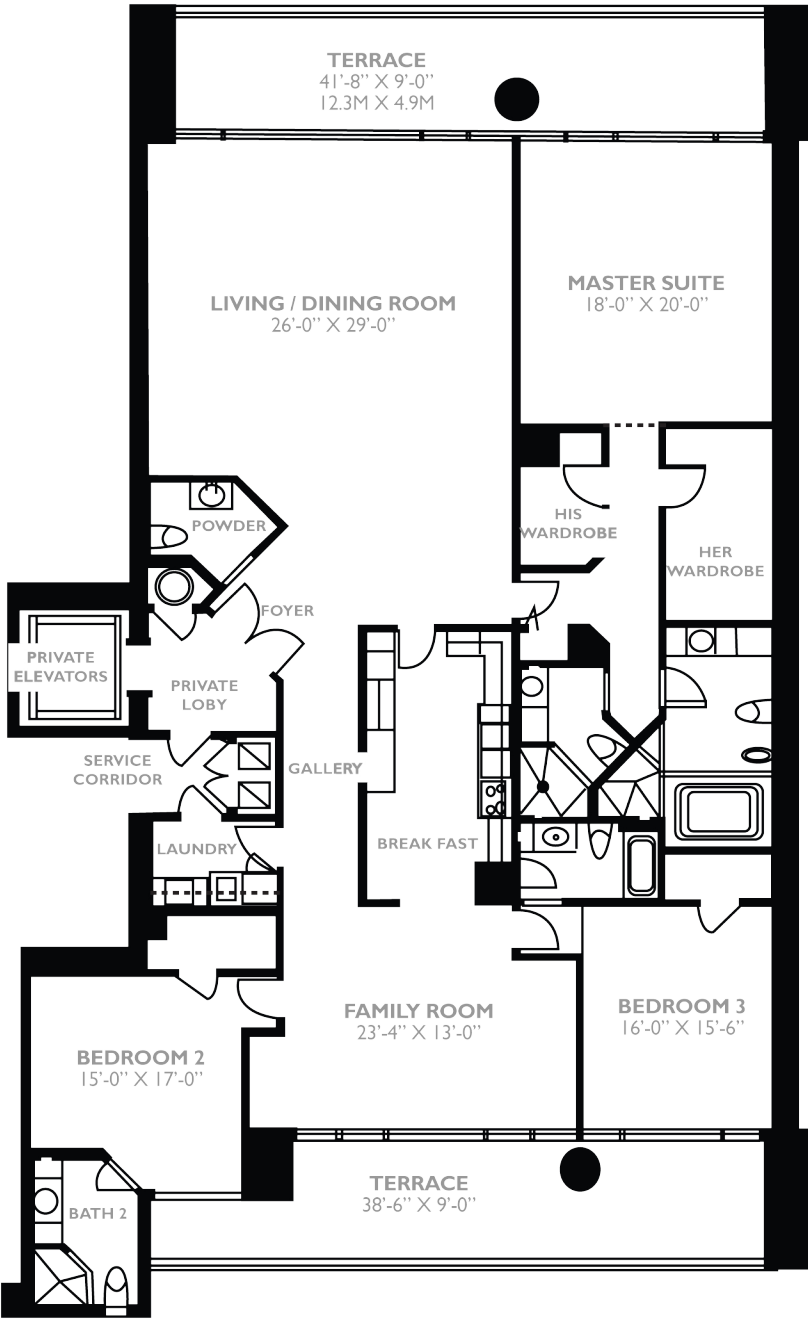


Floorplans are representations of actual layouts and not meant to be relied upon as exact dimensions of as built condominiums.

# Unit C North Tower

## Porto Vita

4 BEDROOMS / 4.5 BATHS	
Enclosed Area	3,385 SQ FT 314 SQ M
Balcony	722 SQ FT 67 SQ M
Total Residence	4,107 SQ FT 381 SQ M



Floorplans are representations of actual layouts and not meant to be relied upon as exact dimensions of as built condominiums.

# Unit B North Tower

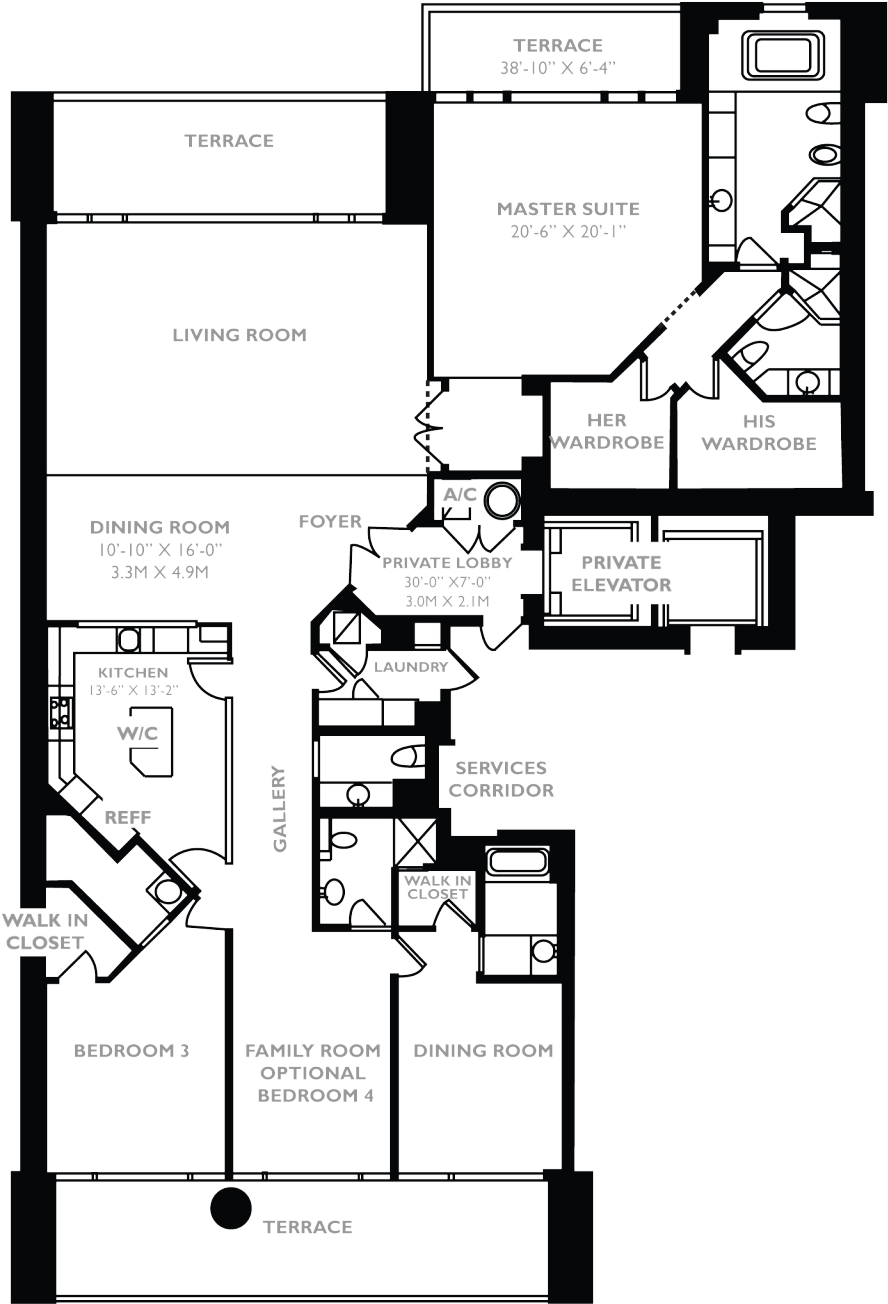
## Porto Vita

3 BEDROOMS / 5.5 BATHS

Enclosed Area 3,334 SQ FT  
313 SQ M

Balcony 625 SQ FT  
59 SQ M

Total Residence 3,959 SQ FT  
372 SQ M

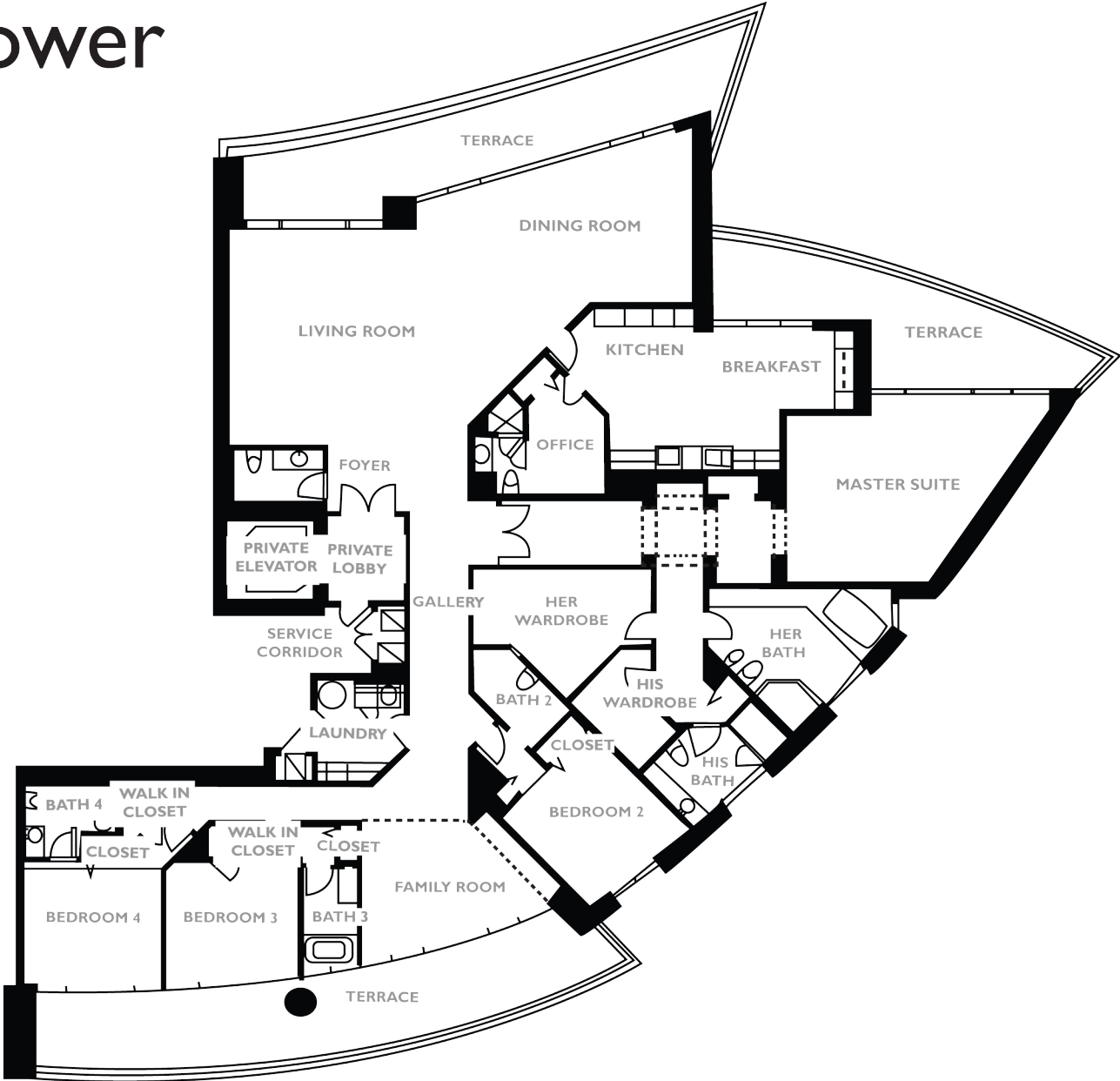


Floorplans are representations of actual layouts and not meant to be relied upon as exact dimensions of as built condominiums.

# Unit A North Tower

## Porto Vita

5 BEDROOMS / 6.5 BATHS	
Enclosed Area	5,141 SQ FT 478 SQ M
Balcony	1,422 SQ FT 132 SQ M
Total Residence	6,363 SQ FT 610 SQ M



Floorplans are representations of actual layouts and not meant to be relied upon as exact dimensions of as built condominiums.

# Unit E North Tower

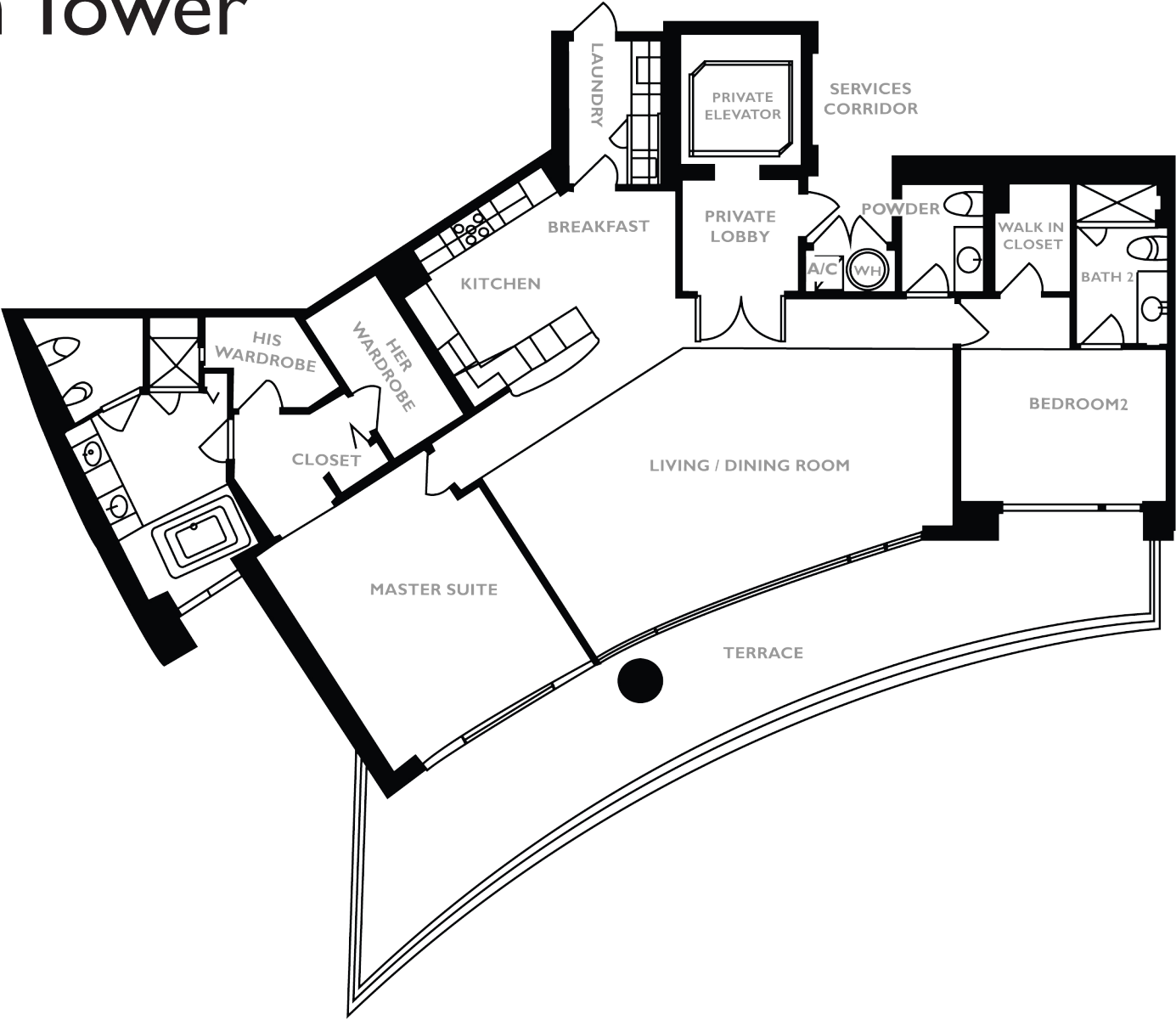
Porto Vita

3 BEDROOMS / 4.5 BATHS

Enclosed Area      2,056 SQ FT  
                                 191 SQ M

Balcony                540 SQ FT  
                                 50 SQ M

Total Residence      2,596 SQ FT  
                                 241 SQ M

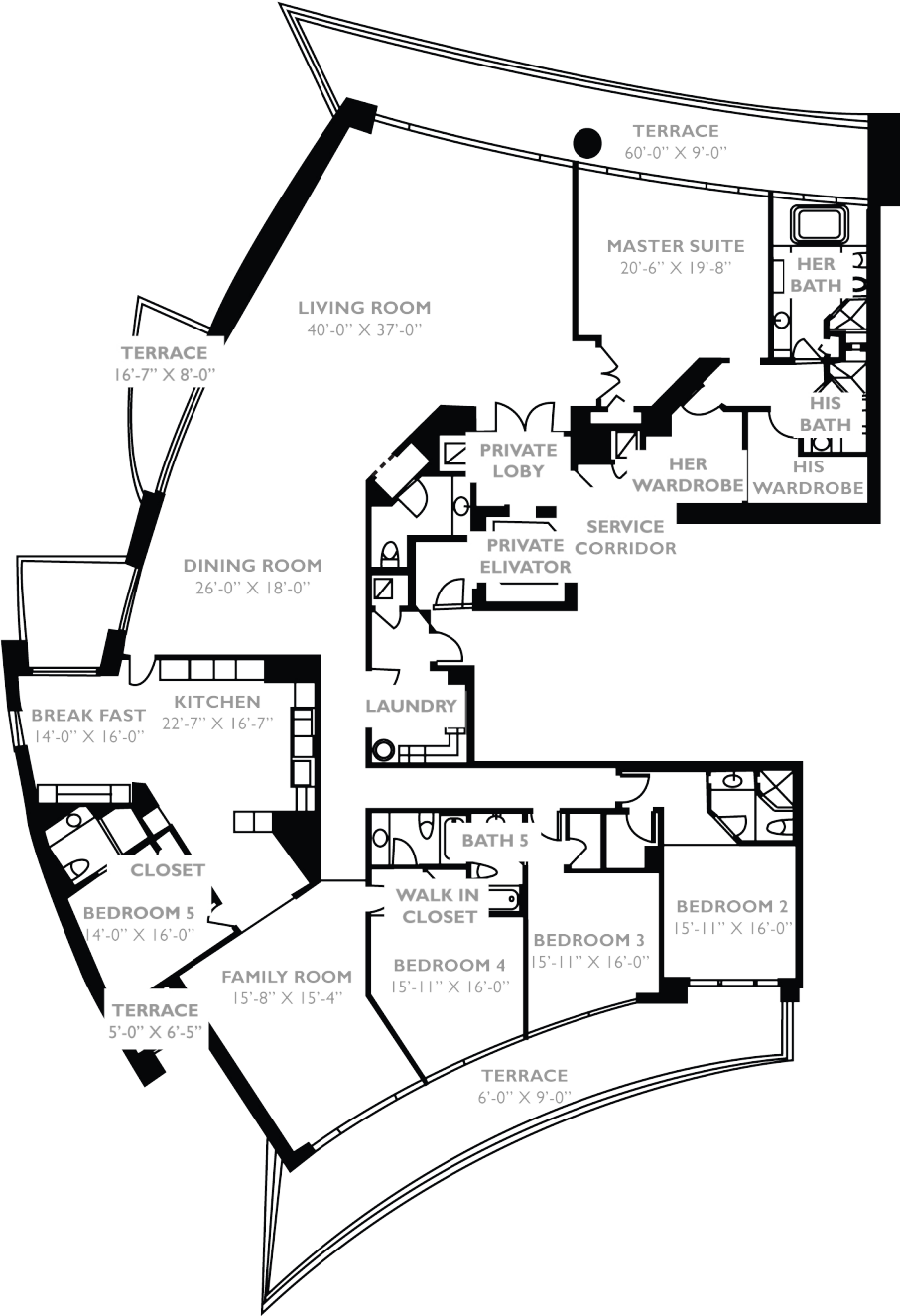


Floorplans are representations of actual layouts and not meant to be relied upon as exact dimensions of as built condominiums.

# Unit F North Tower

## Porto Vita

5 BEDROOMS / 5.5 BATHS	
Enclosed Area	5,792 SQ FT 538 SQ M
Balcony	1,353 SQ FT 126 SQ M
Total Residence	7,145 SQ FT 664 SQ M



Floorplans are representations of actual layouts and not meant to be relied upon as exact dimensions of as built condominiums.